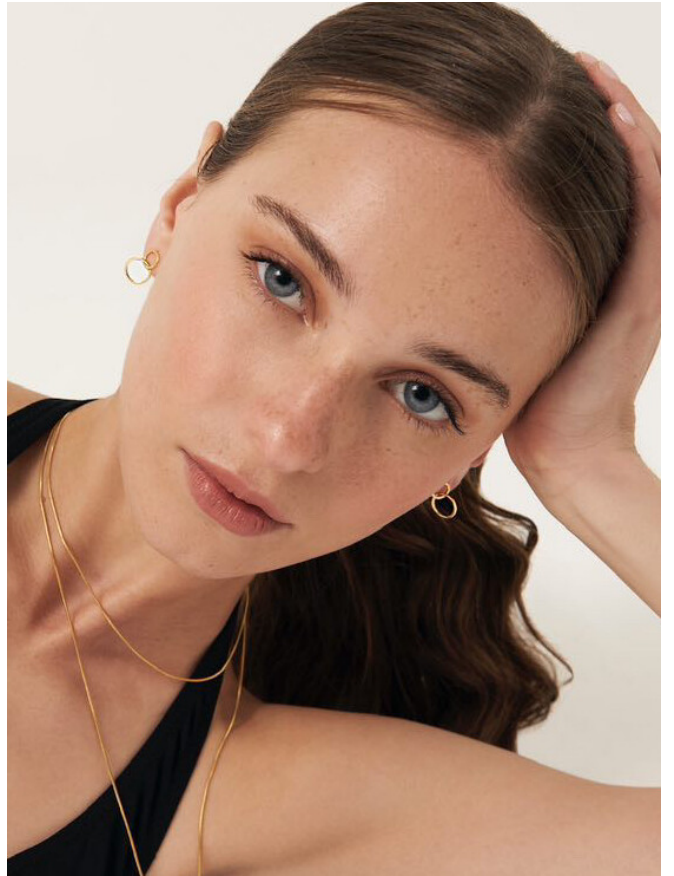




MAISIE STOCK

MCT
MODELS



MAISIE STOCK

MCT
MODELS



MAISIE STOCK

MCT
MODELS



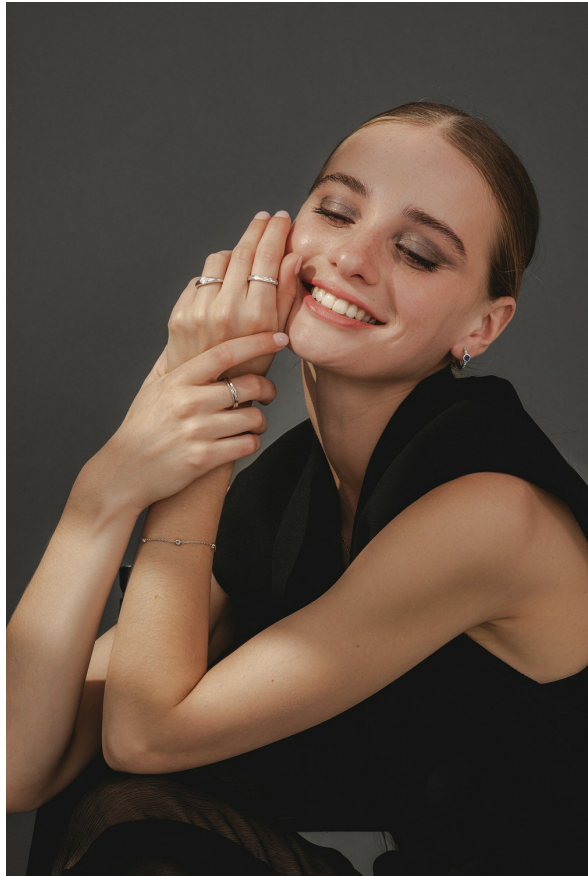
MAISIE STOCK

MCT
MODELS



MAISIE STOCK

MCT
MODELS



MAISIE STOCK

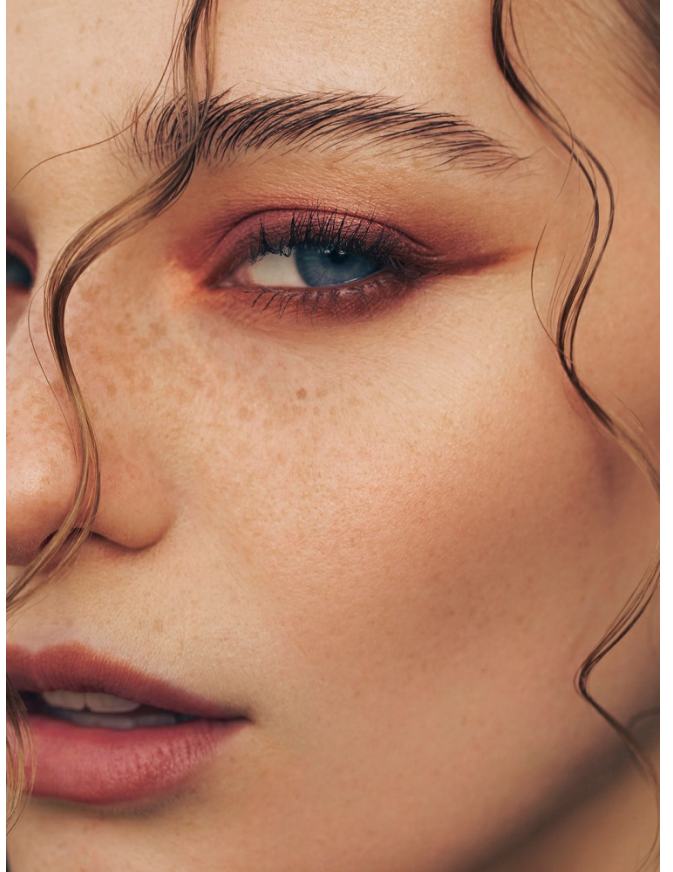


HERMÈS BEAUTY makes us blush with their new Rose Hermès collection.

Capturing the very essence of Hermès' hair, new beauty collection introduces the delicate splashes of rose complexion with a new trend view. In a profusion of picks inspired by the Marling hues of the house's archives, birthed with the iconic creation of the Arabie, evocative since 1963 and splashed across Billy Jockey's riding caps, Hermès reinvented the legacy of the house's traditions with the colour's master, enamel, and fresh rose into a delightful new beauty range.

Ballistic and durable, eight shades of refreshing make-up from the vibrant spirit blend of Rose Alamo to Rose Florant, evoking a misty watercolour introduced with a hint of 1947 - comprise the dramatic harmony of colour that make up the Rose Hermès Silky Blush range. Applied by a precision applicator for a sculpted effect or softened with a steady finger for an ultra-light glow, these long-lasting powders are infused with pieces of amica and sandalwood, giving them a fragrant effect. A lacquered wooden blush brush, finished with gold handle, shows a brushed gold travel blush brush, and a porous blush case specifically designed for Rose Hermès Silky Blush range perfect the playful, charming look.

For the lips, a delicate waxy finish is achieved with the luscious, nourishing Rose Lip Enhancer. Introduced in three radiant shades: Rose Aircoat for the lightest fresh morning look, Rose d'Été to reflect the sun-kissed bloom of an opening flower, and Rose Tint - an amber rose inspiring the summer sun onto the lips, these coverable objects monotypically trace the house's origin whilst marking a new and exciting chapter for Hermès Beauty.



MAISIE STOCK

MCT
MODELS



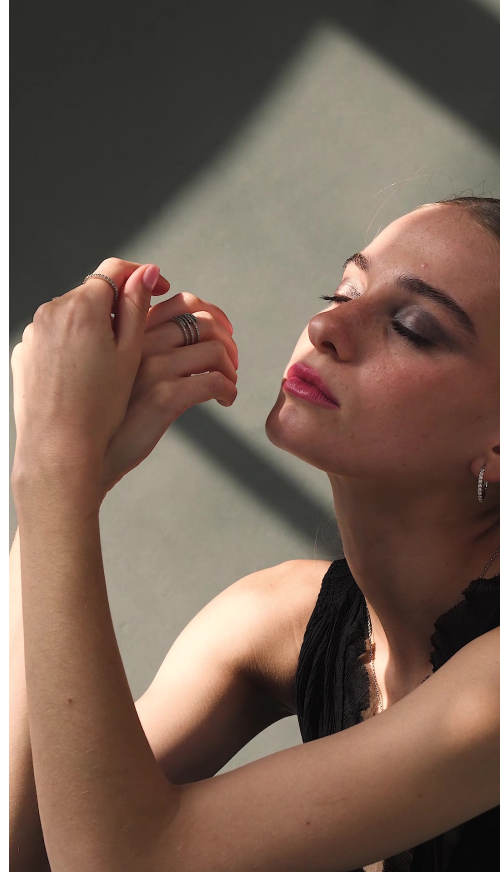
MAISIE STOCK

MCT
MODELS



MAISIE STOCK

MCT
MODELS



MAISIE STOCK

MCT
MODELS