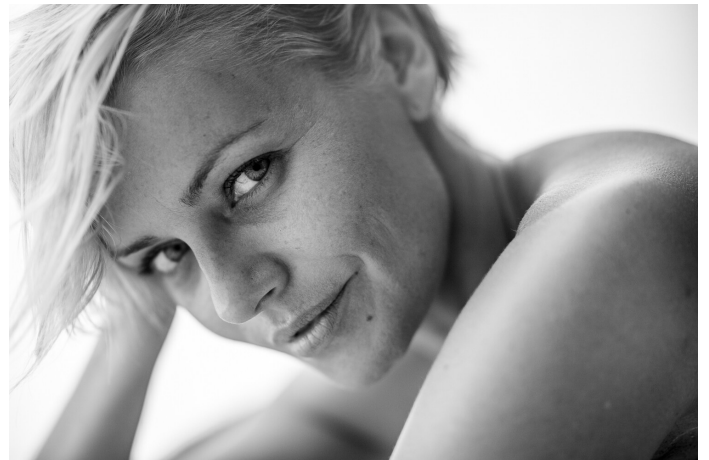




LUCY EDWARDS



LUCY EDWARDS



LUCY EDWARDS



GET SPORTY

With sequins and luxurious fabrics, no one will notice you're wearing your gym kit on the school run

Lucy wears
lightweight jacket, £65, Betty Jackson Black; sequin jersey tunic, £40, Jonathan Saunders/Edison; leggings, £10, Calzedonia; watch, £10, Marks & Spencer.

Finlay wears
sweater, £19, Cos; knee-patch trousers, £12, Mothercare; pumps, £10, Next; hat, £3.99, H&M.



Lucy wears
safari-print top, £125, Jigsaw; harem trousers, £38, Monsoon; suede shoe-boots, £49.99, Zara; necklace, £18.50, Wallis; belt, £24.99, H&M; bangles, £7.50, Rokit.

Holly wears
print dress, £18, Matthew Williamson; sandals, £66, Step2go; beaded bib, £12, Reilik.

TRY TRIBAL

Chunky jewellery and vibrant patterns will show your little tribe who's chief



LUCY EDWARDS

MCT
MODELS



LUCY EDWARDS



LUCY EDWARDS

MCT
MODELS



LUCY EDWARDS