

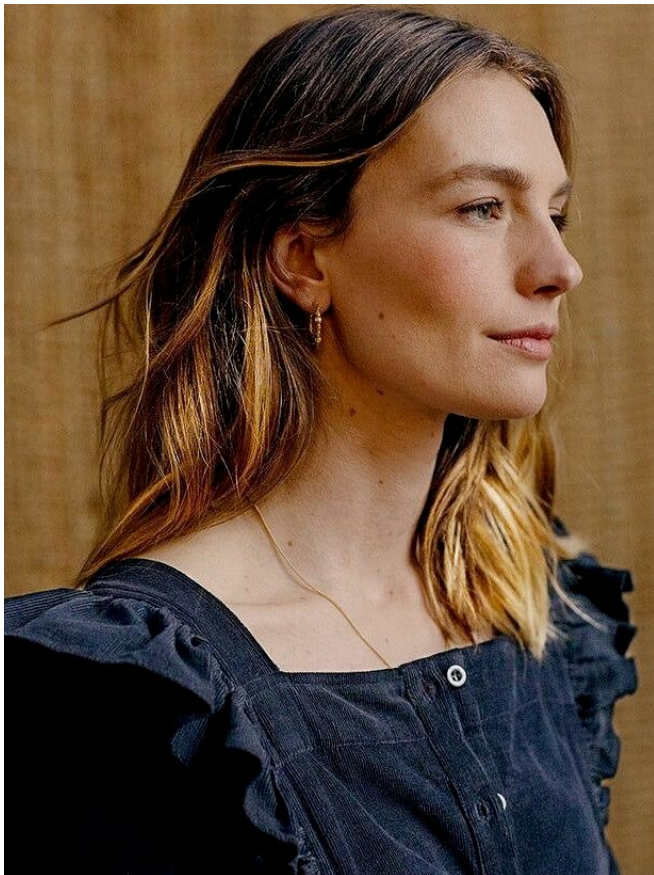


SOPHIE PUMFRETT



SOPHIE PUMFRETT

MCT
MODELS



SOPHIE PUMFRETT

MCT
MODELS



SOPHIE PUMFRETT

MCT
MODELS



Fabulous fashion

From slouchy wide-leg jeans and feminine frilled blouses to cool separates that will see you through the seasons, these are the most covetable looks to try right now

Best DRESSED DENIM

Photography CATHERINE HARBOUR
Styling JO ATKINSON

SPRING UPDATE

There's no escaping the rise of the oversize when it comes to the new shape for jeans, and the Prima fashion team can confirm they're as stylish as they are flattering. Paler washes have a slouchy weekend look, while super-wide dark denim feels smart and tailored. Keep your top half fitted to balance the proportions – a tucked-in white shirt or slim-fit knitted sweater will work perfectly.

Jacket, £85, 8-18, Albany. Shirt, £25, 6-24, Marks & Spencer. Jeans, £95, 25-34W, Lee. Pumps, £65, 3-9, Superga ➔

PRIMA.CO.UK | March 2024 15

SOPHIE PUMFRETT

MC MODELS **T**



SOPHIE PUMFRETT

MCT
MODELS



SOPHIE PUMFRETT

MCT
MODELS



SOPHIE PUMFRETT



OUBAS

Fabulous fashion



Jumpsuit, £69.99, xs-xxl,
H&M. Earrings, £16,
Betty & Biddy. Trainers,
£140, 3-9, Vajr

ONE & DONE Sit back and relax into the weekend with a utility-style jumpsuit. Versatile and stylish, it will take you anywhere – just pair with trainers, gold sandals or block-heel boots and you're dressed for any occasion.

22 PRIMA.CO.UK | March 2024



DENIM DAYS

Low-key yet oh-so-stylish, looser-fitting boyfriend jeans can be a girl's best friend. For a new-season spin, we'll be wearing ours with an oversize pinstripe shirt and must-have cream loafers; an effortless look that's simple to pull off.

Shirt, £79, 4-18, Whistles. Jeans, £90, 24-34W, Jigsaw. Loafers, £119, 3-8, Karen Miller ➔

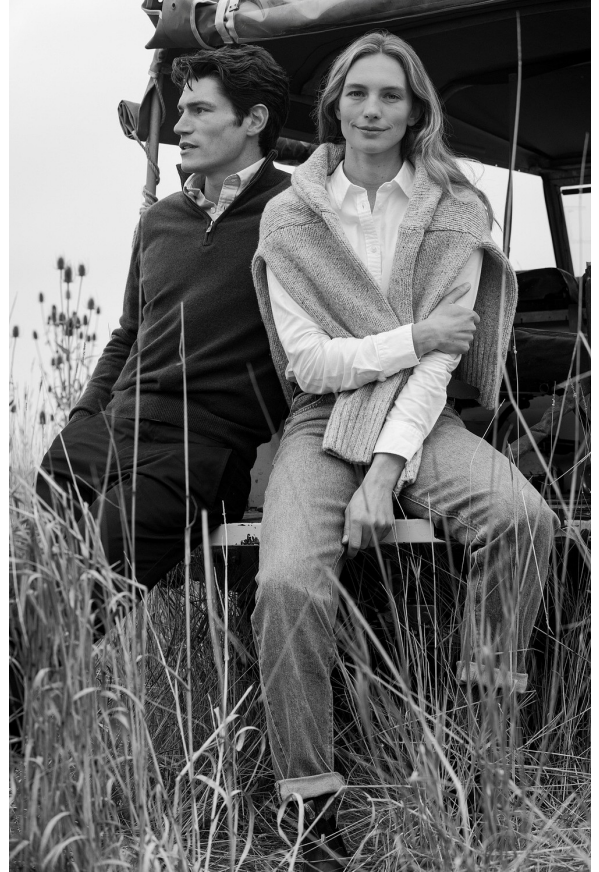
SOPHIE PUMFRETT

MC MODELS **T**



SOPHIE PUMFRETT

MCT
MODELS



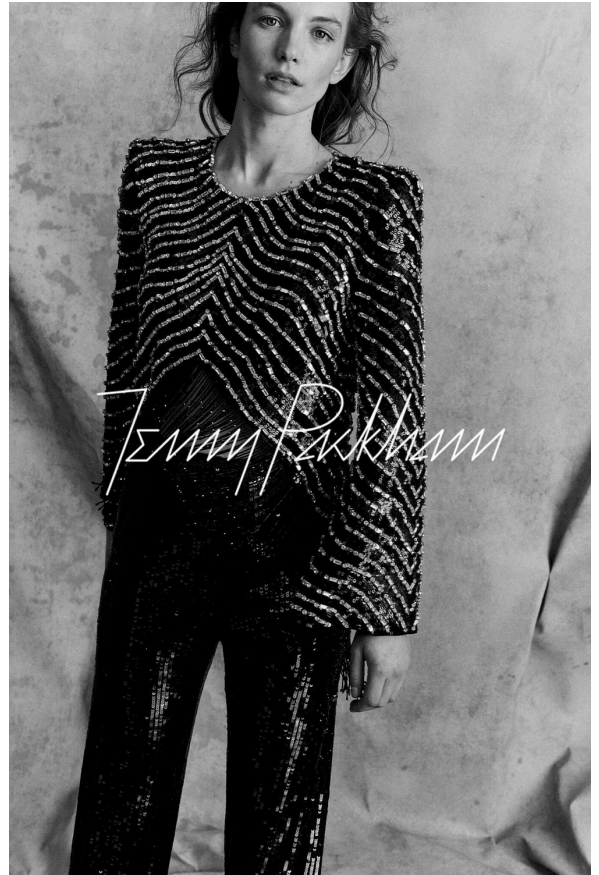
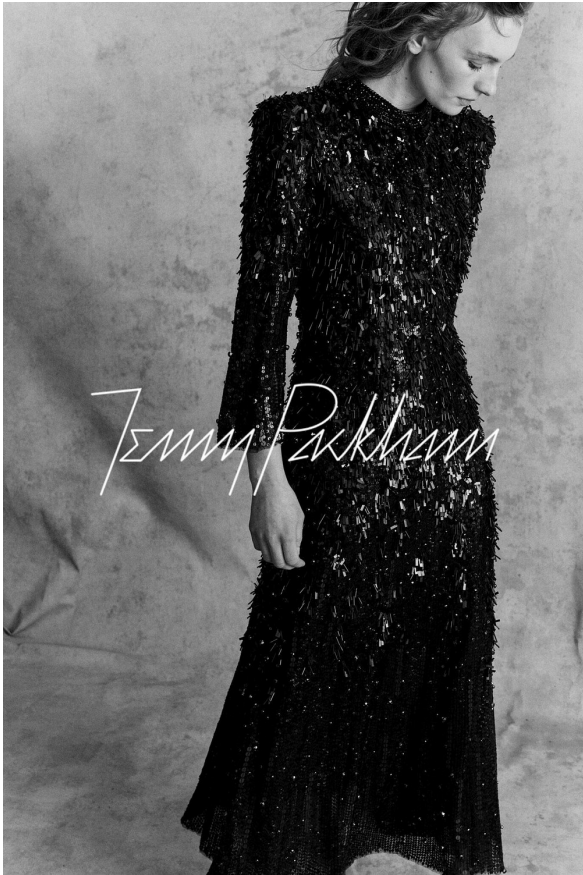
SOPHIE PUMFRETT

MCT
MODELS



SOPHIE PUMFRETT

MCT
MODELS



SOPHIE PUMFRETT

MCT
MODELS